

# STAGE 2

## REINTRODUCTION OF CARE HOME VISITING

Care home residents will be able to receive visitors outside from **3 July**, provided their **home meets strict criteria**, with **infection control measures** remaining in place.

### VISITING IN STAGE 2

#### Essential visits

Where it is imperative for visit if care home resident is at end of life or in personal distress



#### Garden visit with 1 designated visitor

A designated visitor is someone chosen by the resident as a named visitor. This may be a spouse, next of kin or a friend.

### CRITERIA

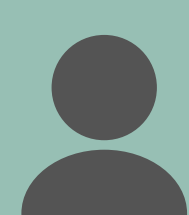
Homes with no outbreak of COVID-19

Homes declared free of COVID-19 by HPS/DPH - 28 days from last symptoms

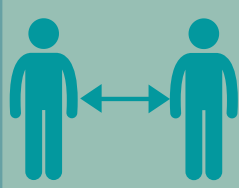
No visiting apart from essential visits in homes with an outbreak



### GARDEN VISITS



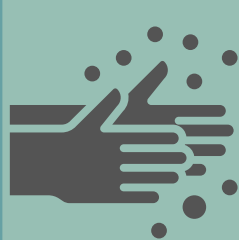
**One** designated visitor who **must not** have symptoms of COVID-19



**2m** physical distancing maintained



Visitors **must** wear own face coverings



Visitors **must** adhere to hand hygiene practice prior to **entering and leaving** care home

**1**

Visits limited to **once** a week



Visits limited to **30 mins**



Staff must wear **appropriate PPE**



Strict cleaning regimes **must** be in place

### OTHER REQUIREMENTS/CONSIDERATIONS

- It is necessary to **stagger visits** to limit the number of people in the care home at the same time
- **Risk/benefit analysis** should be undertaken for each resident
- Visitors will be required to agree to a **screening process** including responding to a **health questionnaire** and signing a **declaration form**
- Visitors will be required to **wear PPE at all times**
- Visitors will be required to **restrict** to locations where the visit is taking place
- Visitors **should not** use toilet facilities and should be made aware in advance of visiting. Exceptions are only made for toilet facilities that are available without entering the main residential facility, but they must be cleaned regularly.

### USEFUL RESOURCES

**Sample risk assessment form**



**Sample visitor protocol for outdoor visiting**



**PPE for visitors**



**Sample visiting performance**



**Template letter on reintroducing visiting**



**Scottish Care**  
Voice of the independent care sector