

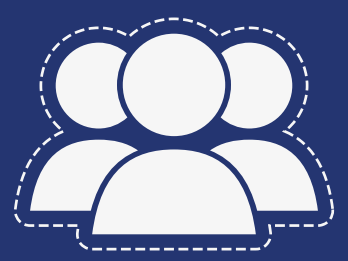
# CARE HOME WORKFORCE DATA REPORT 2017



161 responding care homes



Supporting 9327 residents



Representing 5523 FTE staff



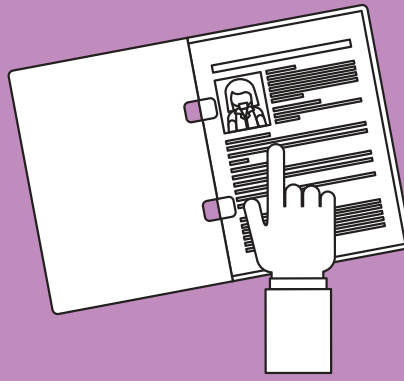
6-8% of care staff originate from the EU

# 42%

of care homes believe paying the Scottish Living Wage has made them less sustainable

# 77%

of care homes have workforce vacancies



79% have found nurse recruitment more difficult this year

# 22%

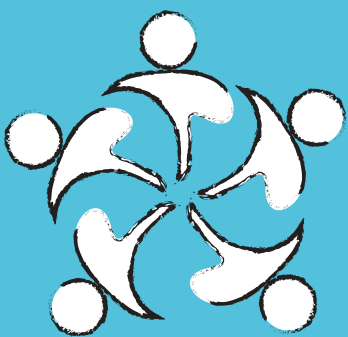
average annual staff turnover

28% of care homes have increased agency use for care staff

(44% increase for nurses)



94% of care homes feel valued by their local community



## Ongoing challenges:



- Funding
- Recruitment & retention
- Staff training & development
- Providing quality, sustainable care

